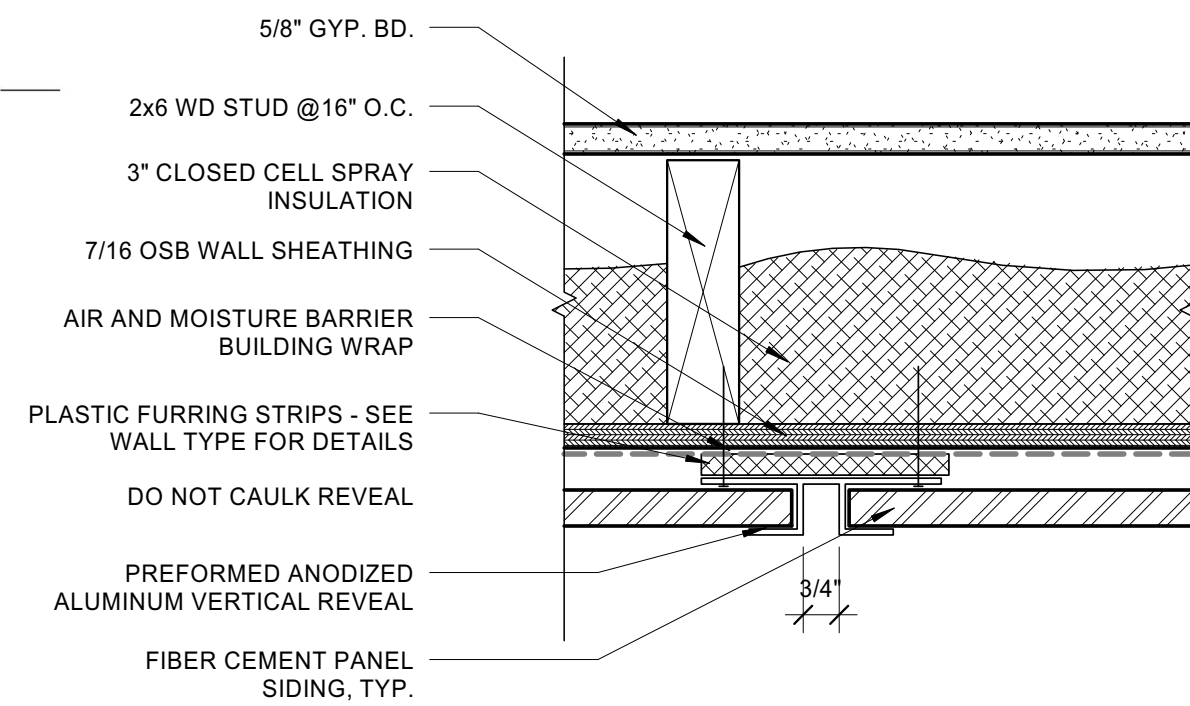




Date: 05/16/14

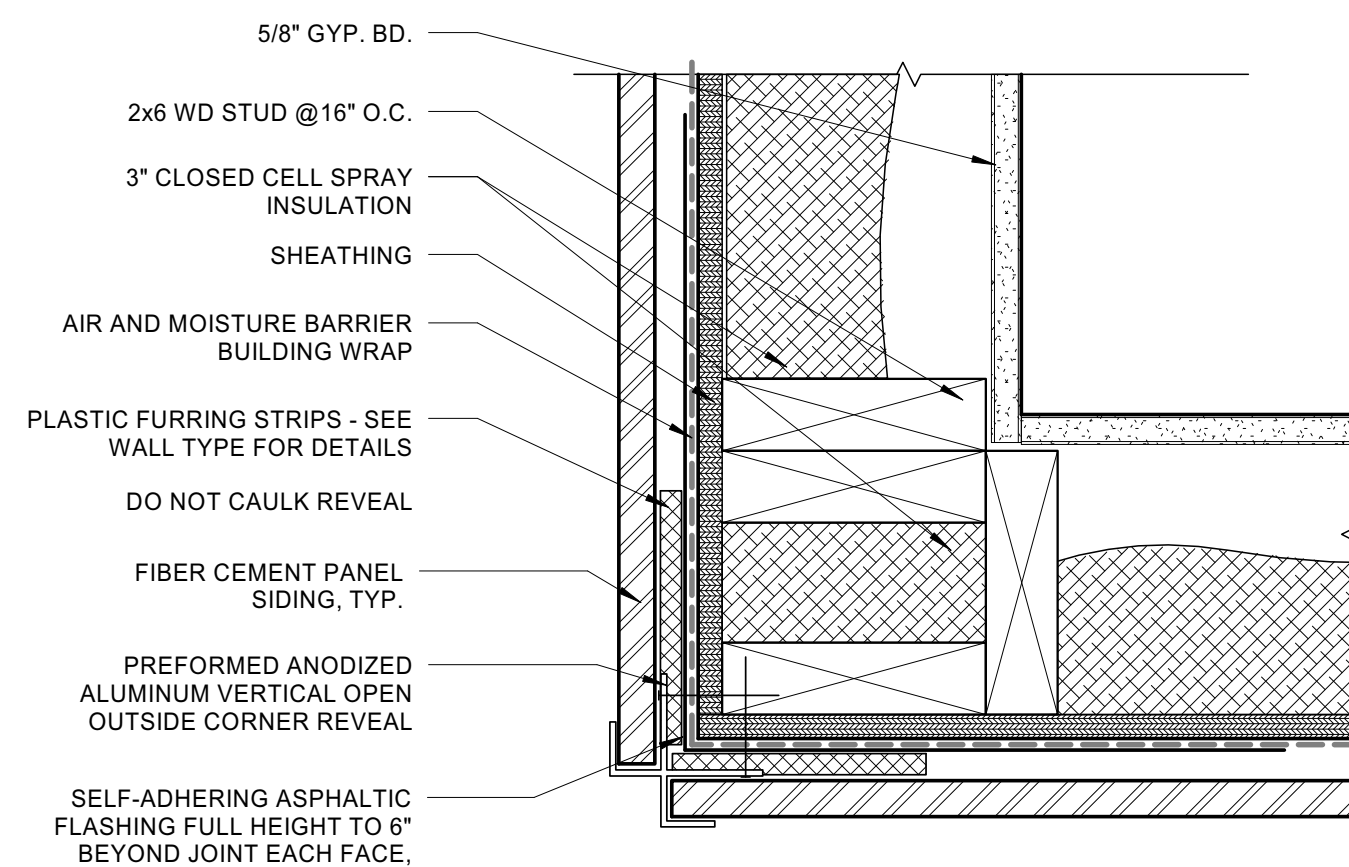
TOP ACCESS STRUCTURE



7 | ROOFTOP ACCESS - VERT. JNT - ADD ALT

3" = 1'-0" 0 1/12" 3" 6" 12"

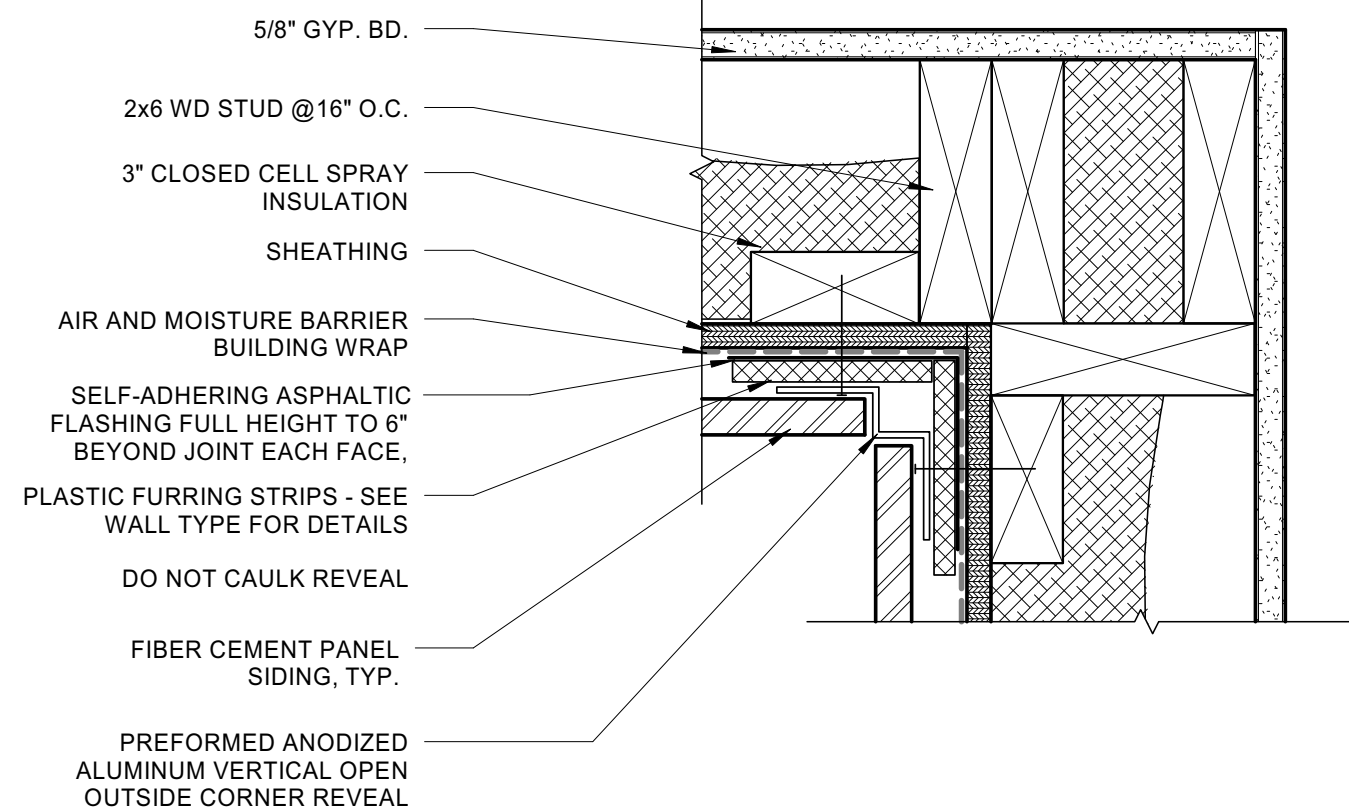
ROOFTOP ACCESS STRUCTURE



6 | ROOFTOP ACCESS - OUTSIDE CORNER - ADD ALT

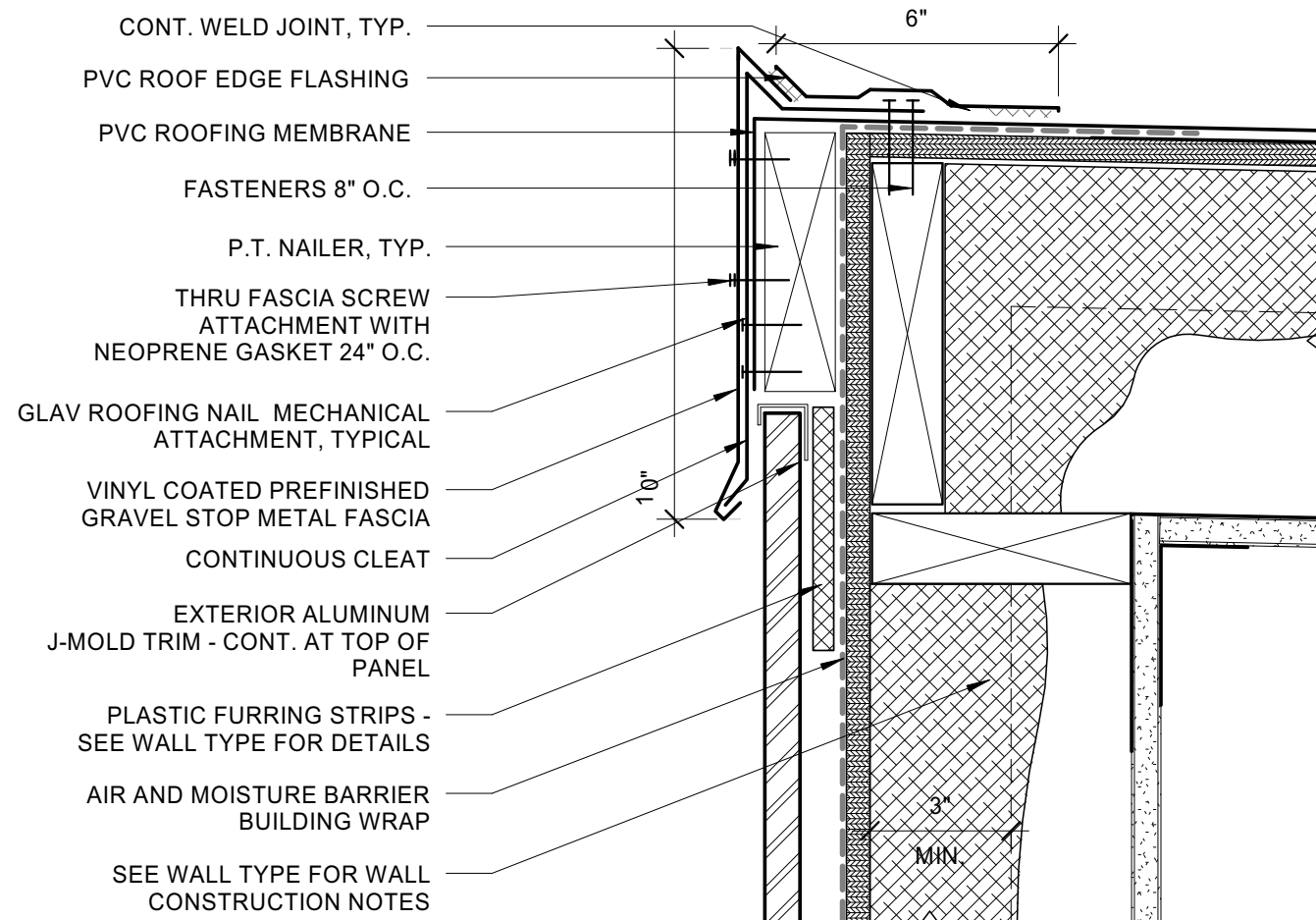
3" = 1'-0" 0 1/12" 3" 6" 12"

ROOFTOP ACCESS STRUCTURE



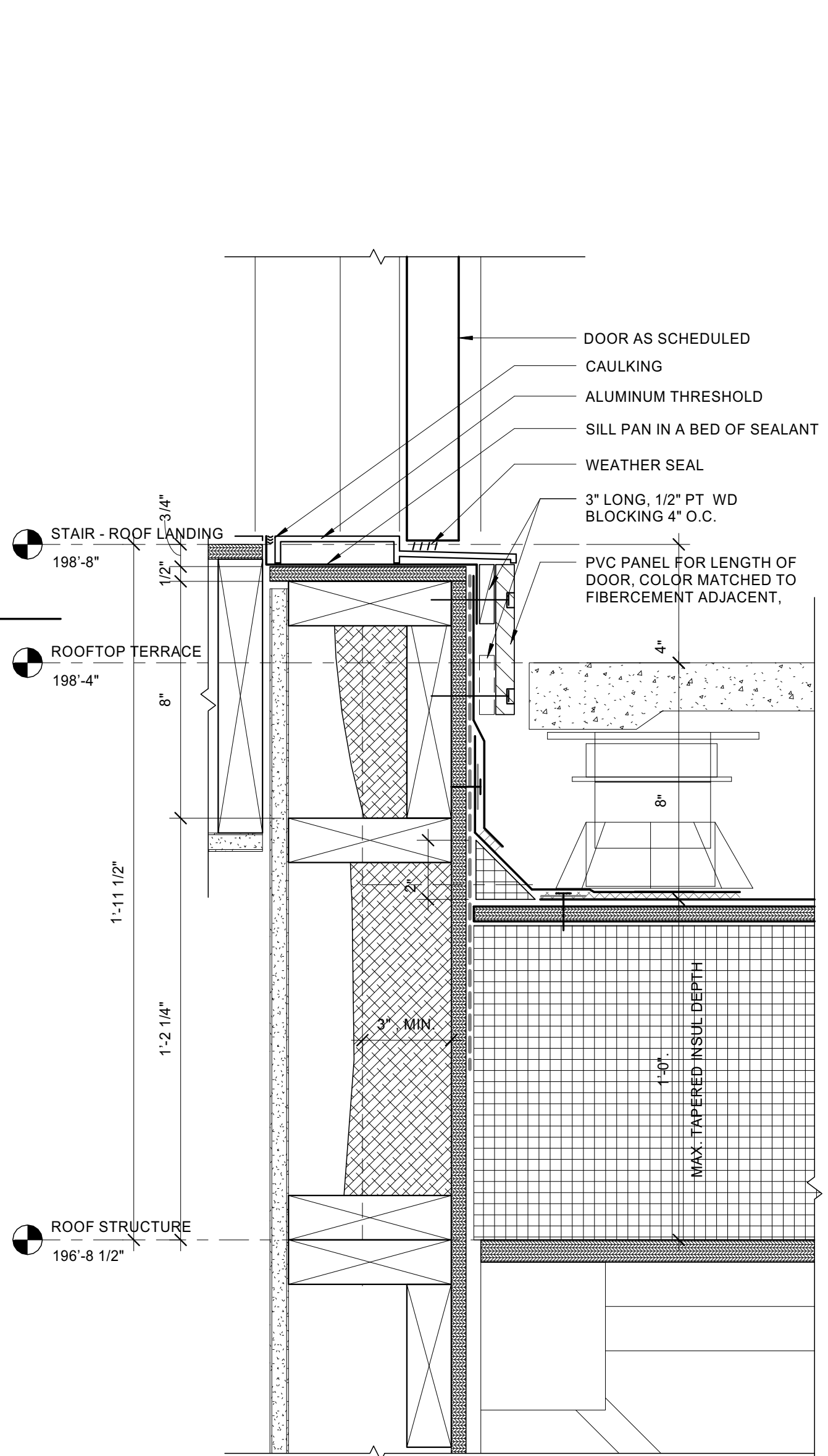
5 | VERTICAL JOINT AT INSIDE CORNER - ADD ALT

3" = 1'-0" 0 1/12" 3" 6" 12"



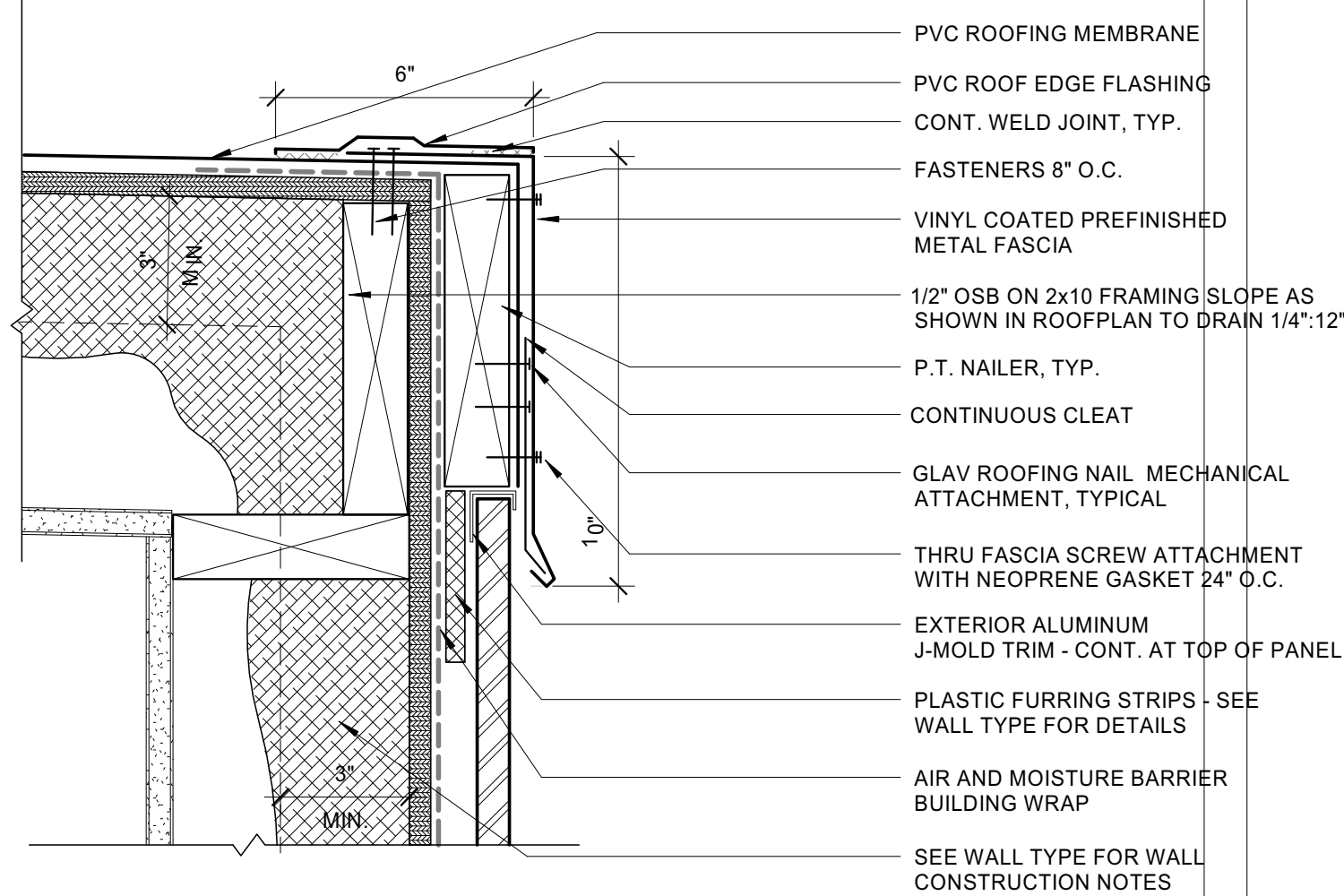
4 | ROOFTOP ACCESS - HIGH EAVE - ADD ALT

3" = 1'-0" 0 1/12" 3" 6" 12"



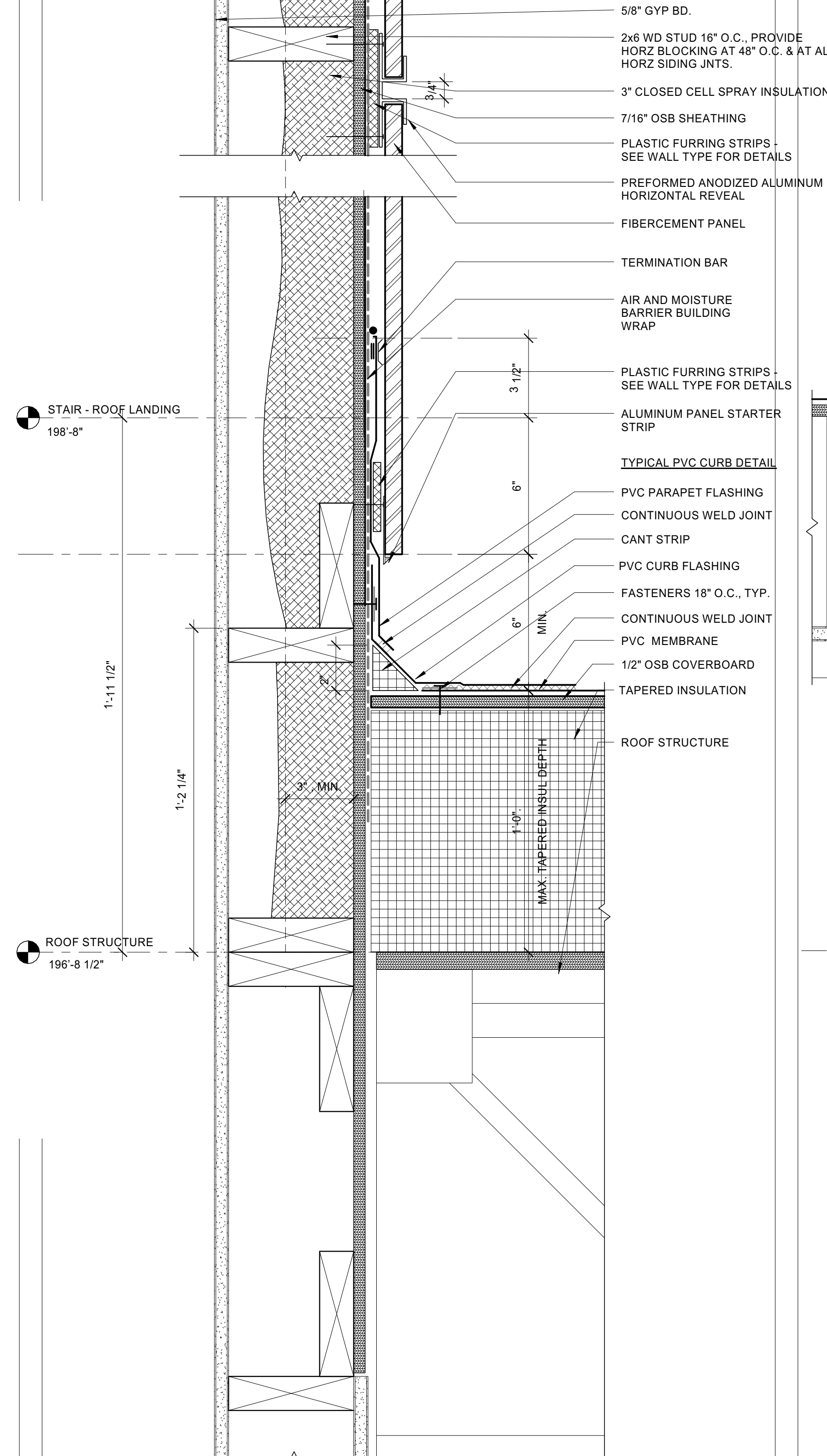
2A | ROOFTOP ACCESS - DOOR DETAIL - ADD ALT

3" = 1'-0" 0 1/12" 3" 6" 12"



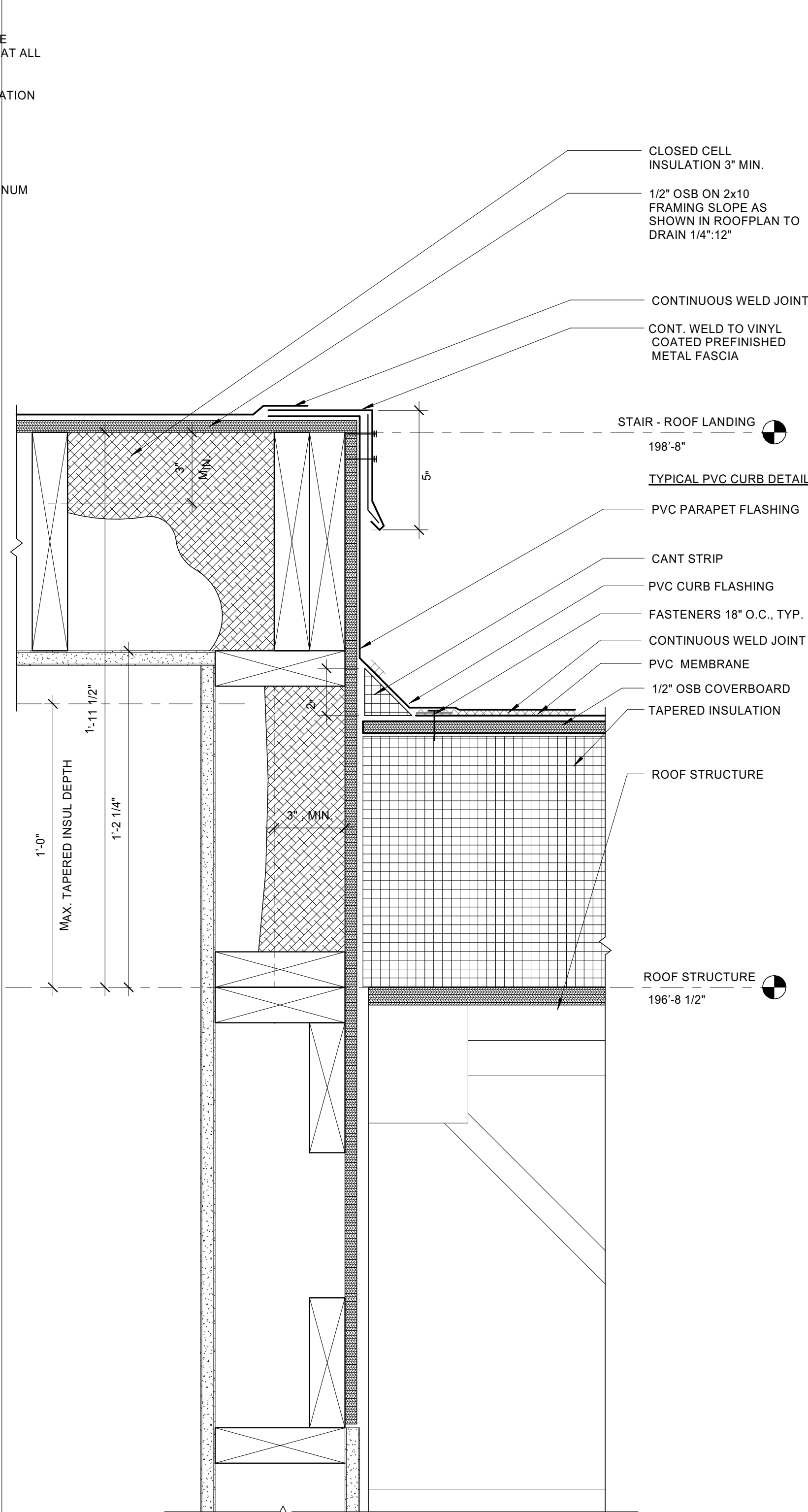
3 | ROOFTOP ACCESS - LOW EAVE - ADD ALT

3" = 1'-0" 0 1/12" 3" 6" 12"



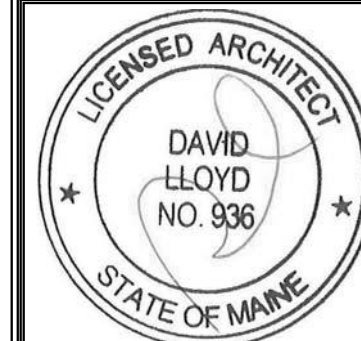
2 | ROOFTOP ACCESS - BASE OF WALL - ADD ALT

3" = 1'-0" 0 1/12" 3" 6" 12"



1 | ROOFTOP ACCESS - BASE OF WALL - BASE BID

3" = 1'-0" 0 1/12" 3" 6" 12"



Prepared For:
118 on Munjoy Hill, LLC
118 CONGRESS STREET
PORTLAND, ME 04101

Consultant:

ARCHETYPE
architects
48 Union Wharf Portland, Maine 04101
(207) 772-6022 Fax (207) 772-4056

Architect:

Project:
118 ON MUNJOY HILL
118 CONGRESS STREET
PORTLAND, MAINE

Revisions:

Date: 07 MAR 2014
Scale: 3" = 1'-0"

**EXTERIOR DETAILS -
ROOF DETAILS**

A5.12